



Gerencia de Calidad Embutidos

TECHNICAL DATA SHEET

SHEET N° ET020DCP001

DATE: 01 17

PAGE: 1 de 8

STAND: 01.2016

REPLACE: ET020PT008

SPECIFICATION OF FINISHED PRODUCT.

| PRODUCT | Pork Heart | | | | | | | | | | | | | | | | | | | | | |
|--|--|---|----------|-------------------------|-------|--|---|--|---|----------|---|--------------------|------|------------------|---------|-------|--------------|----|-----|-------------------|-------|--|
| ARTICLE NUMBER | 8125 | | | | | | | | | | | | | | | | | | | | | |
| BRAND | Plumrose | | | | | | | | | | | | | | | | | | | | | |
| PRODUCT FEATURES | <p>Color: Red with Characteristics of frozen meat. Texture: Frozen/Firm. Flavor: the product should not have different flavor than, The characteristic of the fresh meat products Smell: characteristics of fresh meat. When inspecting the meat visually it should not contain any foreign material, without bruising, cartilage, without pieces of bones</p> | | | | | | | | | | | | | | | | | | | | | |
| MICROBIOLOGICAL VALUES | <p>Mesophilic aerobes (máx.) Coliforms (máx.) Escherichia coli (Limite) Salmonella en 25g.</p> | <p>< 10⁴ ufc/g < 10 ufc/g Negative ufc/g Absent</p> | | | | | | | | | | | | | | | | | | | | |
| PHYSICOCHEMICAL REQUIREMENTS | <table border="1"> <thead> <tr> <th>Characteristics</th> <th>PLUMROSE</th> </tr> </thead> <tbody> <tr> <td>Proteins (%) (p/p) min.</td> <td>15,30</td> </tr> <tr> <td>Phosphates expressed as P₂O₅ (mg/kg) max.</td> <td>-</td> </tr> <tr> <td>Nitrite, expressed as Sodio Nitrite (mg/kg) max.</td> <td>-</td> </tr> <tr> <td>Salt (%)</td> <td>-</td> </tr> <tr> <td>Max Fat. (%) (p/p)</td> <td>5,64</td> </tr> <tr> <td>Texture (Newton)</td> <td>- NA</td> </tr> <tr> <td>Color</td> <td>SEE PICTURES</td> </tr> <tr> <td>pH</td> <td>6,0</td> </tr> <tr> <td>Humidity (%) max.</td> <td>75,69</td> </tr> </tbody> </table> | Characteristics | PLUMROSE | Proteins (%) (p/p) min. | 15,30 | Phosphates expressed as P ₂ O ₅ (mg/kg) max. | - | Nitrite, expressed as Sodio Nitrite (mg/kg) max. | - | Salt (%) | - | Max Fat. (%) (p/p) | 5,64 | Texture (Newton) | - NA | Color | SEE PICTURES | pH | 6,0 | Humidity (%) max. | 75,69 | |
| Characteristics | PLUMROSE | | | | | | | | | | | | | | | | | | | | | |
| Proteins (%) (p/p) min. | 15,30 | | | | | | | | | | | | | | | | | | | | | |
| Phosphates expressed as P ₂ O ₅ (mg/kg) max. | - | | | | | | | | | | | | | | | | | | | | | |
| Nitrite, expressed as Sodio Nitrite (mg/kg) max. | - | | | | | | | | | | | | | | | | | | | | | |
| Salt (%) | - | | | | | | | | | | | | | | | | | | | | | |
| Max Fat. (%) (p/p) | 5,64 | | | | | | | | | | | | | | | | | | | | | |
| Texture (Newton) | - NA | | | | | | | | | | | | | | | | | | | | | |
| Color | SEE PICTURES | | | | | | | | | | | | | | | | | | | | | |
| pH | 6,0 | | | | | | | | | | | | | | | | | | | | | |
| Humidity (%) max. | 75,69 | | | | | | | | | | | | | | | | | | | | | |
| PRODUCT | Pork Heart | | | | | | | | | | | | | | | | | | | | | |


DEVELOPMENT MANAGER


QUALITY MANAGER



Gerencia de Calidad Embutidos

TECHNICAL DATA SHEET

SHEET N° ET020DCP001

DATE: 01 17
PAGE: 2 de 8
STAND: 01.2016
REPLACE: ET020PT008

SPECIFICATION OF FINISHED PRODUCT.

| | |
|--|---|
| PRESENTATION | Sheet product, packed in transparent vacuum, Packed in a corrugated cardboard box with internal dimensions: 580 x 380 x 120 mm and plastic bag of transparent polyethylene of low density without printing, with fixed weight of 10 kg. |
| STORAGE (WAREHOUSES) | Conservave at a temperature under -18°C Storage recomdations: 09 layers of 05 boxes. |
| STORAGE (CLIENTS-CONSUMERS) | Conservave at a temperature under -18°C Storage recomdations: 09 layers of 05 boxes. |
| SHELF LIFE TIME | 12 Months (FROZEN). |
| LABEL DATA | Sanitary permit N°EXP-15111-05-G-03. This product has to be sold according to its weight CPE: 0716395390 Barcode – UPC: (01)17591081081250(3103)010000 |
| RECOMEDATIONS FOR CONSUMERS | Thaw, and prepare as you prefare |
| STORAGE RECOMEDATIONS FOR CONSUMERS | After opening, cover the parts, exposed to the environment, with a plastic sheet to minimize contamination, dehydration and color changes. Keep frozen. |
| STORAGE RECOMEDATIONS FOR CLIENTS | Keep the product frozen, under aproved conditions, without risk of biological & chemical contamination Keep the product in original packing. Comply with storege recomedations ((STORAGE(WAREHOUSES))). |


DEVELOPMENT MANAGER


QUALITY MANAGER



Gerencia de Calidad Embutidos

TECHNICAL DATA SHEET

SHEET N° ET020DCP001

DATE: 01 17

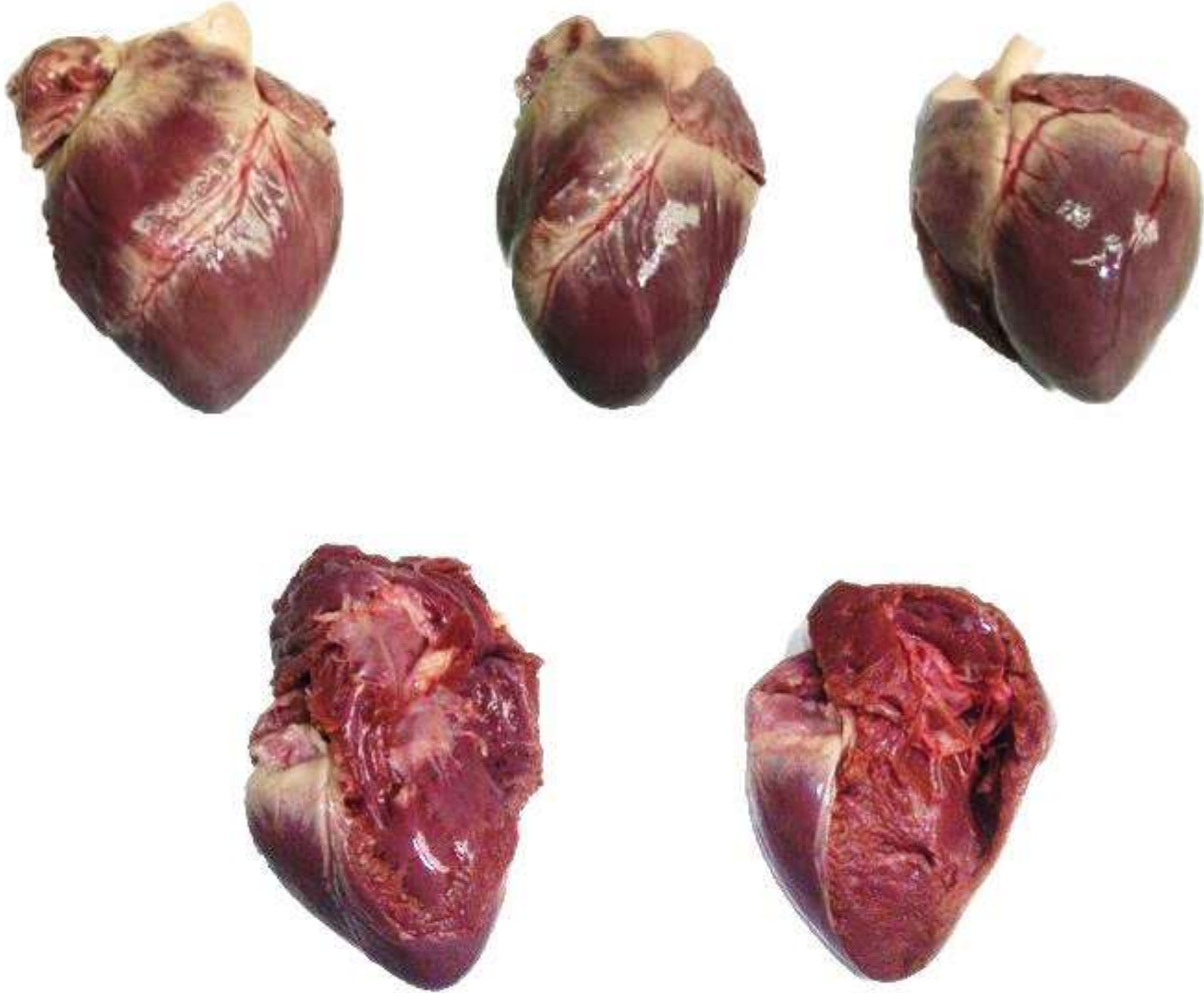
PAGE: 3 de 8

STAND: 01.2016

REPLACE: ET020PT008

SPECIFICATION OF FINISHED PRODUCT.

PRODUCT PICTURE (fresh meat)



DEVELOPMENT MANAGER

QUALITY MANAGER



Gerencia de Calidad Embutidos

TECHNICAL DATA SHEET

SHEET N° ET020DCP001

DATE: 01 17

PAGE: 4 de 8

STAND: 01.2016

REPLACE: ET020PT008

SPECIFICATION OF FINISHED PRODUCT.

PRODUCT PICTURE (BOX/FRESH)




DEVELOPMENT MANAGER


QUALITY MANAGER



Gerencia de Calidad Embutidos

TECHNICAL DATA SHEET

SHEET N° ET020DCP001

DATE: 01 17

PAGE: 5 de 8

STAND: 01.2016

REPLACE: ET020PT008

SPECIFICATION OF FINISHED PRODUCT.

PRODUCT PICTURE (BOX/FROZEN)




DEVELOPMENT MANAGER


QUALITY MANAGER



Gerencia de Calidad Embutidos

TECHNICAL DATA SHEET

SHEET N° ET020DCP001

DATE: 01 17

PAGE: 6 de 8

STAND: 01.2016

REPLACE: ET020PT008

SPECIFICATION OF FINISHED PRODUCT.

PRODUCT PICTURE (BOX/TOP)




DEVELOPMENT MANAGER


QUALITY MANAGER



Gerencia de Calidad Embutidos

TECHNICAL DATA SHEET

SHEET N° ET020DCP001

DATE: 01 17

PAGE: 7 de 8

STAND: 01.2016

REPLACE: ET020PT008

SPECIFICATION OF FINISHED PRODUCT.

PRODUCT PICTURE (FINISHED PRODUCT)



DEVELOPMENT MANAGER

QUALITY MANAGER



Gerencia de Calidad Embutidos

TECHNICAL DATA SHEET

SHEET N° ET020DCP001

DATE: 01 17
PAGE: 8 de 8
STAND: 01.2016
REPLACE: ET020PT008

SPECIFICATION OF FINISHED PRODUCT.

PRODUCT PICTURE (LABEL)



0001705101

Processed and packed at the Bolivarian Republic of
Venezuela by Plumrose Latinoamericana C.A.,
Cagua Edo. Aragua.
R.I.F N° J - 00019361 - 4
PSN° ARA - TIPO I - 000032586
Authorization N° VZLA - UTNC - 051301 - 070 - C
This product has to be sold according to its weight
CPE:0716395390

Keep at a temperature lower than - 16° C



000001

Pork Heart

Net Weight: 10,000 KG

Material: 8125

Lot: 0001705101

Production Date: 30.01.2017

Exp. Date: 30.01.2018



(01)17391081081250(3103)010000

DEVELOPMENT MANAGER

QUALITY MANAGER